

## Site 1

*Ulva* sp.

Low tide pool

## Site 4

*Colpomenia sinuosa* (Mertens ex Roth) Derbès & Solier*Heterosiphonia crispella* (C.Agardh) M.J.Wynne*Dictyota mertensii* (C.Martius) Kützing*Digenea simplex* (Wulfen) C. Agardh

## Site BV5

mixture of *Dictyota*, *Plocamium* and *Polysiphonia**Sargassum cymosum* C.Agardh*Ganonema farinosum* (J.V.Lamouroux) K.C.Fan & Yung C. Wang*Plocamium concinnum* Areschougmixture of *Dictyota* and *Polysiphonia*

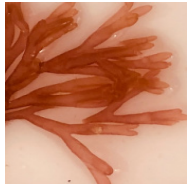
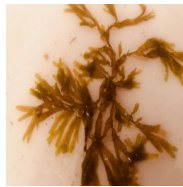
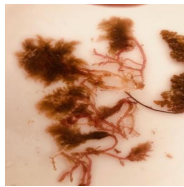
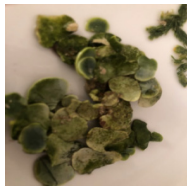
## Site 6

*Anatheca montagnei* F.Schmitz*Anatheca montagnei* F.Schmitz*Scinaia furcellata* (Turner) J.Agardh*Meristotheca decumbens* Grunow*Heterosiphonia crispella* (C.Agardh) M.J.Wynne*Caulacanthus ustulatus* (Mertens ex Turner) Kützing

## Site BV7

*Nostoc commune* Vaucher ex Bornet & Flahault (Cyanobacteria)*Bryopsis pennata* J.V.Lamouroux*Dictyota* sp.*Hydroclathrus clathratus* (C.Ag.) M.Howe*Hypnea spinella* (C.Agardh) Kützing*Hypnea pannosa* J.Agardh*Hypnea spinella* (C.Agardh) Kützing

Site BV8



*Halimeda tuna*  
(J.Ellis & Solander)  
J.V.Lamouroux

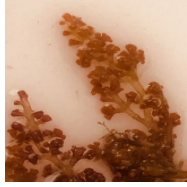


*Pterocliadiella capillacea*  
(S.G.Gmelin)  
Santelices & Hommersand

*Dictyota mertensii*  
(C.Martius) Kützing

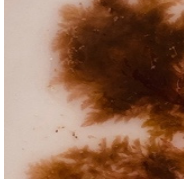


*Gelidium corneum*  
(Hudson)  
J.V.Lamouroux

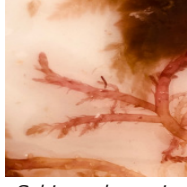


*Caulerpa sertularioides*  
(S.GGmelin)  
M.Howe

*Scinaia furcellata*  
(Turner) J.Agardh



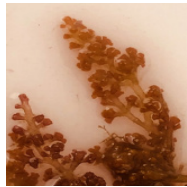
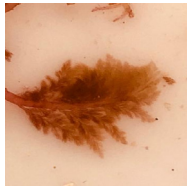
*Laurencia obtusa* (Hudson)  
J.V.Lamouroux



*Hypoglossum hypoglossoides*  
(Stackhouse)  
Collins & Hervey

*Schimmelmannia bollei* Montagne

Site 9



*Schimmelmannia bollei* Montagne

*Laurencia obtusa* (Hudson)  
J.V.Lamouroux

*Laurencia obtusa* (Hudson)  
J.V.Lamouroux

Site 10 no photos taken

Figure S1. Photographs of Selected Species of Macroalgae Collected at Low Tide around Boa Vista from the Sites in Figure 1.